



Installation

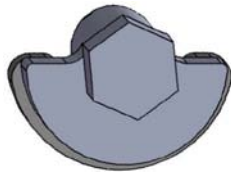
1. Hand tighten channel on bottom (or side if applicable) of opening with included Hex bolts and washers
2. Install cover onto the frame and into the channel. Align cover and channel to fit over opening and fully tighten channel to frame.
3. Install Cam-Fast fastener along top. Tighten just past first contact with cam-washer. Refer to diagram for proper positioning.

Removal

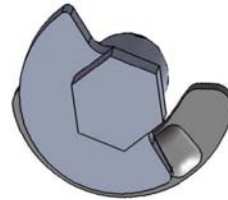
1. Turn each Cam-Fast Bolt a half turn counter-clockwise. Remove cover. The Channel will stay mounted to the frame and Cam-Fast Bolts will remain in place until cover is remounted.

Remounting

1. Place cover back into Channel and turn each Cam-Fast bolt a half turn over cam washer to secure the cover to the frame.



Incorrect Cam-Fast Bolt installation



Correct Cam-Fast Bolt installation*

*BUMP ON WASHER IS USED TO PREVENT CAM-FAST BOLT FROM LOOSENING DURING MOTOR VIBRATION